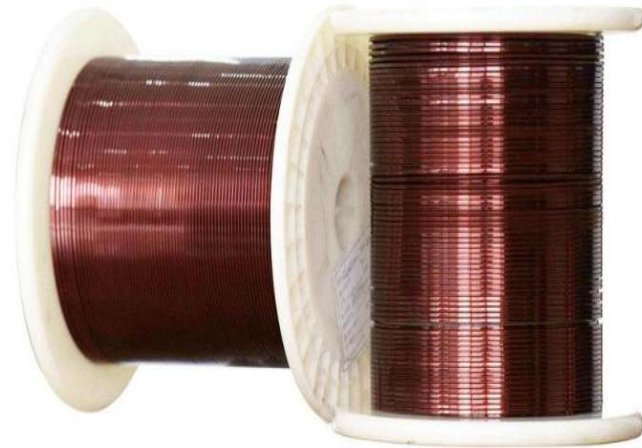


ENAMELED SQUARE
COPPER WIRE

Enameled square copper wire is a type of magnet wire that is commonly used in electrical applications. It consists of a solid copper core that is coated with a layer of insulating enamel.

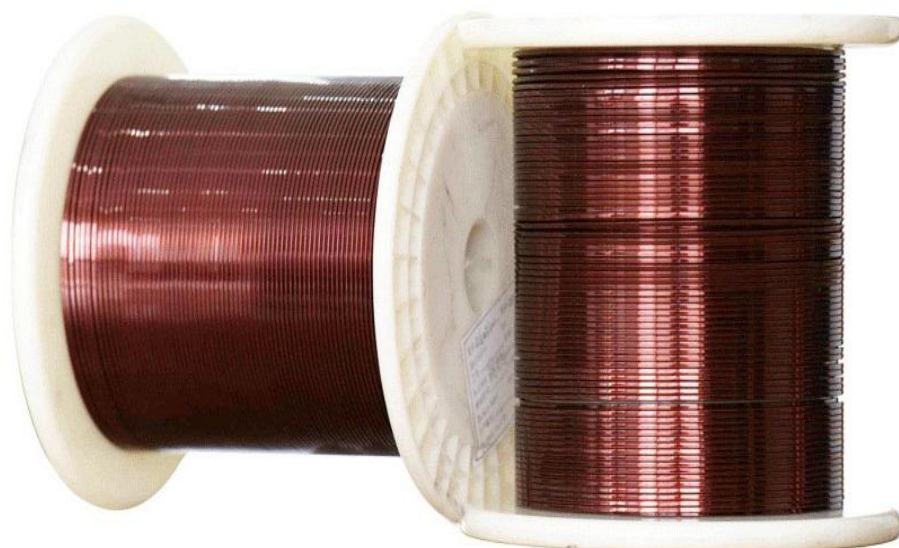


LP Industry has experienced team for enameled Wires, advanced technology, excellent equipment, strict management is the foundation of the company continuous development and expansion, and the Enameled Wires win the trust of customers. We believe that through our continuous efforts and pursuit, we will be able to achieve mutual benefit and win-win with our customers!



Enameled Square Copper Wire

Conductor	Copper Wire
Dimension	Thickness(width)/a(b)0.45~6mm
Thermal Class(°C)	180 (Class H); 200(Class C);220(Class C +); 240(Class HC)
Insulation thickness	Single,Heavy
Certificate	UL
Standard	IEC,NEMA,GB,JIS
Packing	30kg- 150kg ply-wood spool(250*400/250*500/250*600)
Application	Transformer;generator;refrigeration System, Class C generators, UPS power supply, electronic transformer etc.



Packing

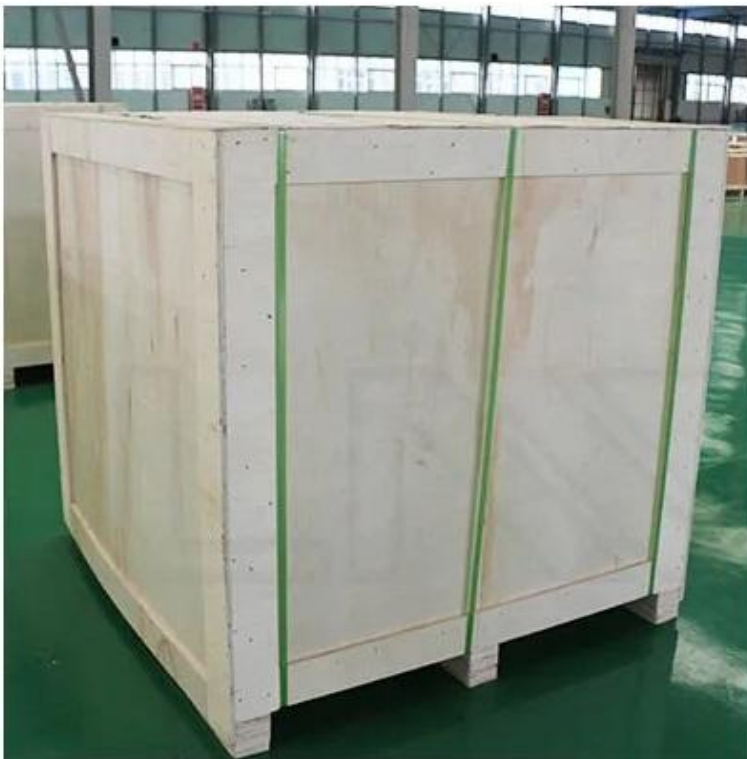


Innerpacking:

PT-25/PT-30/PT-60/PT-90/PT-200
plastic spool or
250mm*400mm/250mm*500mm/250
0mm*600mm wooden spool

Outer packing:

wooden case outer Winding wire



LP Enameled Square Copper Wire Feature:

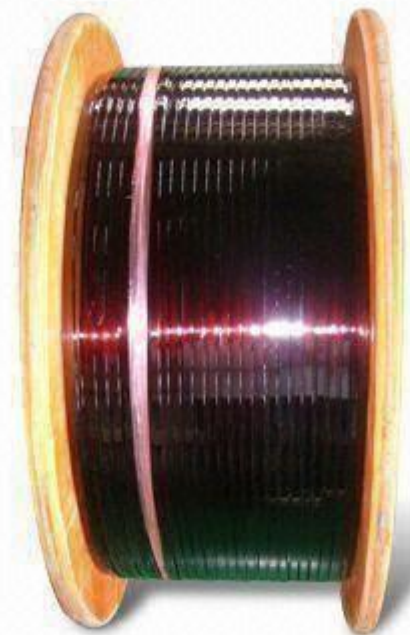
High Conductivity: Copper is renowned for its exceptional electrical conductivity. The square shape of enameled copper wire allows for increased surface area, resulting in lower resistance and improved electrical performance.

Space Efficiency: The square cross-section of the wire allows for efficient packing in compact spaces, enabling designers to optimize the use of available area in electrical components and devices.

Thermal Stability: Enameled square copper wire exhibits excellent thermal stability, making it suitable for applications that involve high temperatures. It can withstand heat generated by electrical currents without compromising its electrical and mechanical properties.

Mechanical Strength: The copper core provides the wire with enhanced mechanical strength, allowing for easier handling and installation. It is more resistant to bending, twisting, and breaking compared to other wire types.

Versatility: Enameled square copper wire finds applications in various industries, including electronics, telecommunications, automotive, and renewable energy. It is widely used in transformers, inductors, motors, solenoids, and other electromechanical devices.



Zhengzhou LP Industry

CO.,LTD

Email:lpsales@cnlp.cc

Tel: 0086-371-65861281

Whatsapp/Mobile:0086-18103865695

Website:www.lp-industry.com

Address:#4 building One Belt One

Road

Industry,

Jinshui District, Zhengzhou, China

Welcome to enquiry LP Industry Enameled
Square Copper wire.

