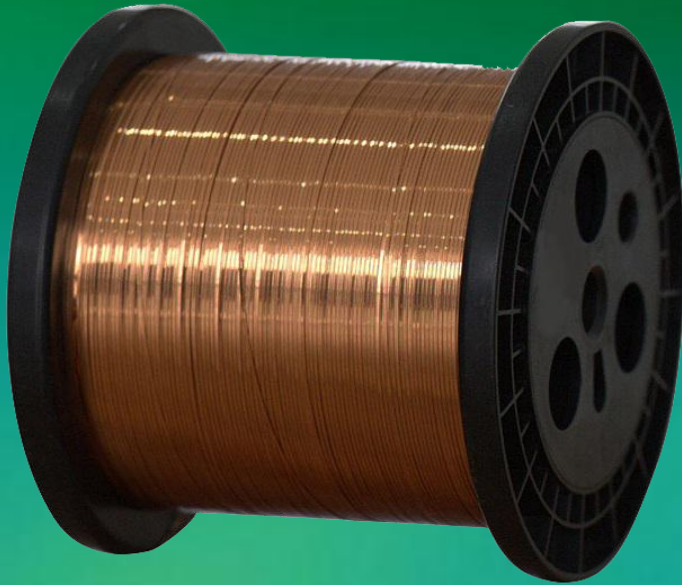


MAGNET ENAMELED WIRE



**ULTRA-FINE ENAMELED
RECTANGULAR COPPER WIRE**

Ultra-fine enameled rectangular copper wire is coated with enamel insulation , and a specialized form of electrical conductor crafted from copper, which is meticulously shaped into rectangular.





LP Industry has experienced team for Enameled Wires, advanced technology, excellent equipment, strict management is the foundation of the company continuous development and expansion, and the Enameled Wires win the trust of customers. We believe that through our continuous efforts and pursuit, we will be able to achieve mutual benefit and win-win with our customers!



Ultra-fine Enameled Rectangular Copper Wire

Conductor	Copper
Dimension	Thickness(a): 0.1~0.6mm; Width(b): 0.2~6.0mm
Feature	Solderable and Self-bonding
Thermal Class (°C)	180 (Class H);200 (Class C);220 (Class C+);240(Class HC)
Certificate	UL
Standard	IEC,NEMA,GB,JIS
Packing	30kg- 150kg ply-wood spool(250*400/250*500/250*600)
Application	High temperature voltage devices, instrumentation and various types of electronic components windings etc.

INSULATION CLASSIFICATIONS ACCORDING TO IEC

Class	Temperature	
	°C	°F
E	120	248
B	130	266
F	155	311
H	180	356
C	200	392
C+	220	428
HC	240	464

Packing

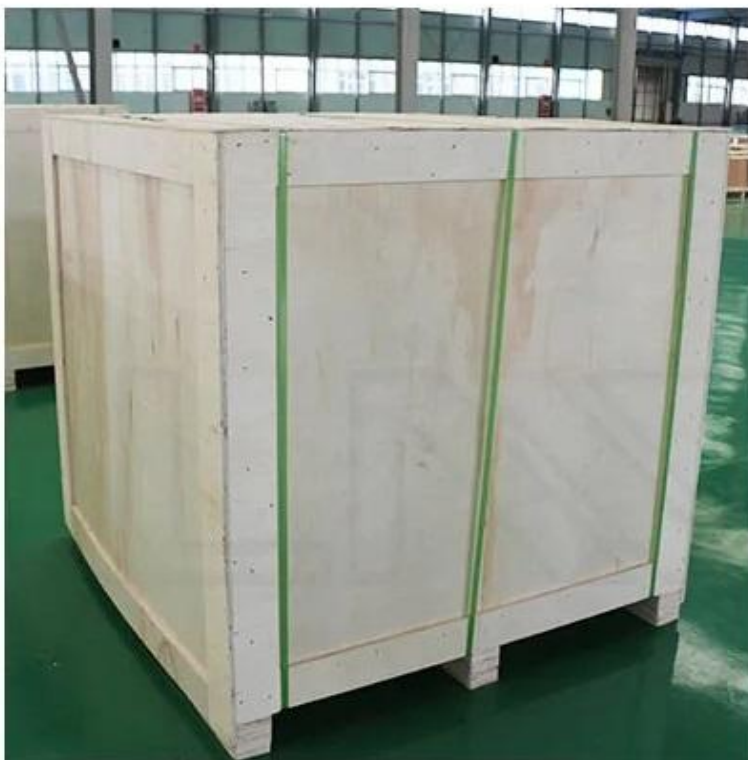


Innerpacking:

PT-25/PT-30/PT-60/PT-90/PT-200
plastic spool or
250mm*400mm/250mm*500mm/250mm*600mm wooden spool

Outer packing:

wooden case outer Winding wire



Ultra-fine Enameled Rectangular Copper Wire

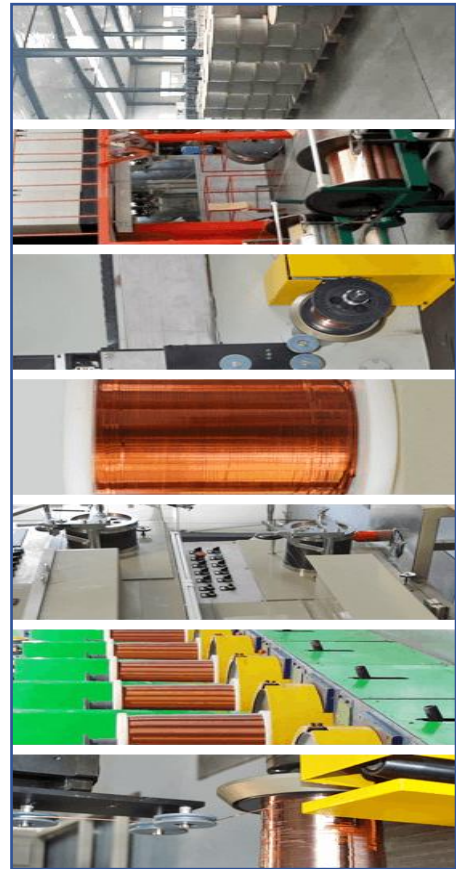
Ultra-fine Diameter: This type of wire typically has an extremely small diameter compared to standard wires.

High Electrical Conductivity: Copper is known for its excellent electrical conductivity. High conductivity ensures efficient transmission of electrical signals or power.

Rectangular Shape: Unlike traditional round copper wire, ultra-fine enameled copper wire comes in a rectangular cross-section.

Flexible and Durable: Despite its small size, ultra-fine enameled rectangular copper wire is often designed to be flexible and durable, allowing it to withstand bending and shaping without compromising its electrical properties.

Specialized Applications: Due to its unique combination of features, ultra-fine enameled rectangular copper wire finds applications in various industries, including electronics, telecommunications, aerospace, medical devices, and more. Common applications include high-frequency transformers, inductors, solenoids, and miniature motors.



Zhengzhou LP Industry

CO.,LTD

Email:lpales@cnlp.cc

Tel: 0086-19900927672

Whatsapp/Mobile:0086-19900927672

Website:www.lp-industry.com

**Address:NO 86. Jingsan Road, Jinshui
District, Zhengzhou, China**

Welcome to enquiry LP Industry

Ultra-fine Enameled Rectangular Copper Wire

